



First Lutheran Caller

FEBRUARY 2010

FEBRUARY

February is the shortest month of the year. It was named after the Roman festival *Februa*, which was a time for purification and washing. (Spring cleaning perhaps?) Although it is short, it contains several holidays, most of which are minor in nature. In February we celebrate Groundhog Day, Valentine's Day, President's Day, and Ash Wednesday. It is also Black History Month.

In just four short weeks, just 28 days, we will have the opportunity to see if Punxsutawney Phil can predict the end of winter, express our undying love to our sweetheart, remember our two most famous presidents (Washington and Lincoln), and begin our forty-day Lenten pilgrimage.

Wow. No wonder February flies by so quickly. We have so much celebrating. And that's not even counting the lesser known celebrations of the birthdays of Charles Lindbergh (4), Laura Ingalls Wilder (7), Rosa Parks (4), and Gordon from Sesame Street (24). Baseball fans will want to remember the birthdays of Hank Aaron (5) and Babe Ruth (6). And don't forget that the Twins pitchers and catchers will report to spring training on February 21. (This is the year they win it all for sure.)

With all the activity going on in February, I trust that you will find the time to remember the most important day of the month for Christians. Ash Wednesday, February 17, is the start of the very meaningful season of Lent. You will have ample opportunities here at First for prayer, worship, study, and general spiritual growth. We will have a sermon series on the Sundays in Lent, which will help us rediscover the true nature of Jesus. Wednesday services offer a midweek pause to turn our thoughts toward God. And Rock's delicious soup and sandwich suppers will please everyone's palate. The "Reset" small study groups will give us a chance to study the Bible in a small group of caring Christians.

So don't get bogged down waiting for the groundhog to see his shadow or trying to find the perfect gift for your Valentine. Set aside time now to observe the season of Lent in a most meaningful way.

Oh, I almost forgot. February 28 is Public Sleeping Day – the official day for sleeping in public. This year it's on Sunday. Yikes!

Pastor Tom

Inside this issue

Children's Ministry	2
Music Ministry	3
Adult Opportunities	4
Youth Ministry	5
Worship Assistants	6

THE ENDOWMENT FUND - "DOLLARS FOREVER"

Charitable Remainder Trust

A charitable remainder trust is a tax-exempt trust that receives and manages assets to provide an income to a donor and a gift to a charity at the donor's death. The income can cover one or more lives or a term of years. It offers multiple tax-saving advantages (an income tax deduction; the bypass or deferral of capital gains tax otherwise due on the sale of an appreciated asset; and an estate tax deduction). In addition, a charitable remainder trust removes asset management responsibilities from the donor. Income from the trust may fluctuate, and setting up the trust generally requires professional tax, legal and accounting advice.

From The Stewardship Corner,
courtesy of Thrivent Financial

ASH WEDNESDAY IS FEBRUARY 17TH

Join us for a service at 2:00 pm in the Chapel or 7:00 pm in the Sanctuary. This year's theme for our Wednesday night services is "Walking with the Disciples." Come "meet" two new disciples each week!

2010 Offering Envelopes are available for pick up in the Commons. Please call the church office if you would prefer to have the envelopes mailed.



2009 Contribution Statements are available for pick up in the Commons.

Please call the church office if you would prefer to have the statement mailed.



WORSHIP AND MUSIC

By Peter Carlson, Director of Music



During the month of November the Board of Worship asked the congregation to write down one thing that they found inspiring at the worship services that they attended. The Board is currently evaluating these responses and I'll report on them in this space in the near future.

I thank you for the many positive things you all said about worship here at First. Of course there were a few complaints as well and we've tried to address them as best we can. But one comment really caught my attention. This person was (anonymously) complaining about something and then added "This is not worship!" His or her complaint was not baseless; other people have voiced concerns

about the same thing. But I've been troubled by the writer's implication that, because of this problem, we weren't really worshipping.

It's a tricky thing for us to tell others what is and isn't worship. We certainly know what makes *us* feel comfortable and worshipful, but if we don't like something it doesn't mean that it's not a valid way to worship God. The song that you hate may be a favorite of the person in the pew behind you. One person's "stiff" service might feel holy and reverent to someone else. The comfort of a casual, informal worship may cause nothing but discomfort for certain worshippers.

The point is this: for a congregation member to find worship absolutely perfect each and every time, he would have to be worshipping in a congregation

of one. But of course that's not what we do. We come together—all of us with our many different personalities—to worship as the body of Christ. This necessarily means that sometimes you're going to see, hear or do something that you don't really like. It's just part of being in a community. By all means, the pastors, Board of Worship and I want to hear your comments about worship—good and bad. But remember that whether you like your music soft or loud, your readers fast or slow, your pastors old or young, your style formal or casual...you can bet that someone in our congregation likes just the opposite. So let's give thanks to God for variety...variety in our worship, but even more importantly, variety in our worshippers!

MUSIC AT FIRST

The Metropolitan Boys Choir will hold their annual spring concert here on Sunday, Feb. 21 at 4:00 pm. This concert is a fundraiser for First Lutheran, so bring a friend and enjoy the talents of these fine young men! Tickets are \$7 each and can be purchased at the door.



IN WORSHIP THIS MONTH...

- 2/7 Traditional ELW liturgy with Holy Communion
- 2/14 Contemporary ELW liturgy
- 2/21 Contemporary ELW liturgy with Holy Communion
- 2/28 Traditional ELW liturgy

YOUNG AT HEART

Tuesday, Feb 16, 1 p.m.

Minnesota Byways Doug Ohman will present a program by that title. Mr. Ohman is an accomplished photographer who has focused his work on Minnesota, exploring the back roads and the main streets of our great state. His slide show will feature favorites from five photo books he has published and the stories that go with them. The books are:

- Barns of Minnesota
- Churches of Minnesota
- Courthouses of Minnesota
- Schoolhouses of Minnesota
- Cabins of Minnesota



\$8 for program and a delicious dessert.

Comin' up:

Tuesday, March 2, 9 a.m.

Mission project at 'Feed My Starving Children' Think of Haiti!

Tuesday, April 20

Minnesota Science Museum
Dead Sea Scrolls & Omni Theater

Fri, Sat, Sun, May 14, 15, & 16

A 3-day/2 night motorcoach trip to Stoughton, Wisconsin, for a Sytendde Maj (May 17) festival and other points enroute.



June

A Twin's ballgame in the new stadium. Down by bus; back on the Northstar commuter rail.



SUNDAY ADULT EDUCATION

You are never too old to learn more about your faith and how to live it in the world. Classes start at 10:00 in Martin Luther Hall. Pick up a cup of coffee and a treat from the youth coffee bar on your way in.

February 7 *God after Darwin: Evolution and Divine Providence*

February 14 *Intelligent Design in Biology*

February 21 *Faith Out Lord*

Today we begin a new series on talking about our faith. We know we are supposed to be witnesses to our faith. But many of us are reluctant. Either we are afraid to try, or we are discouraged from having tried and failed. This video series offers hope for us tongue-tied Christians. We have a faith story, and we can have words for our experience of God.

February 28 *Faith Out Lord – Session 2*

WEDNESDAY NIGHT ADULT CLASS

Romans

We will be concluding our study on Paul's letter to the Romans. All are welcome to look at sections of this important book from the perspective of history, literature, Lutheran theology, and devotion. Class meets in room Gabriel from 6:00-7:00. Pastor Carlson will be the discussion leader. Bring your Bible if you have one, or talk to Pastor Tom if you want to get a Bible of your own. Classes will end February 10. Ash Wednesday, February 17, will begin the season of Lent, with Lenten worship services being held at 7:00 each week.



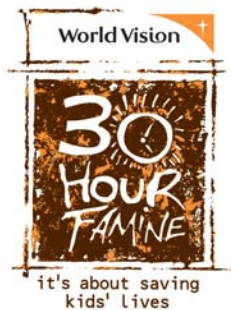
YOUTH CREDITS- CHANGES

After rewarding more credits last year than expected, the Youth Board has made some changes to the Youth Credits program so that we can afford to continue the program. Youth can continue to earn \$3.00 per hour at specified events for their own accounts. There are other times when a different amount is earned, such as the Lutefisk Dinner and Flower Sales.

However, siblings cannot earn for each other and parents cannot earn credits unless specified otherwise. This means that each youth will have their own individual account and only that youth can earn money to be put into that account.

Youth Credit accounts are kept track of by Leisha Tays, Director of Youth and Family Ministry. Credits can be used to pay for events and trips such as mission trips, camps, and retreats. To use the credits, find out how much you have in your account (on the church website under “youth,” on the youth board or contact Leisha) and subtract that from the amount due. On your check for the remaining amount, write “Credits” on the check’s memo. Another change to note is that up to half of an event can be paid for in credits. After that, if there is a financial need, please speak to Leisha about possibly using more credits or obtaining a scholarship.

30 HOUR FAMINE —A few empty stomachs can change the world!



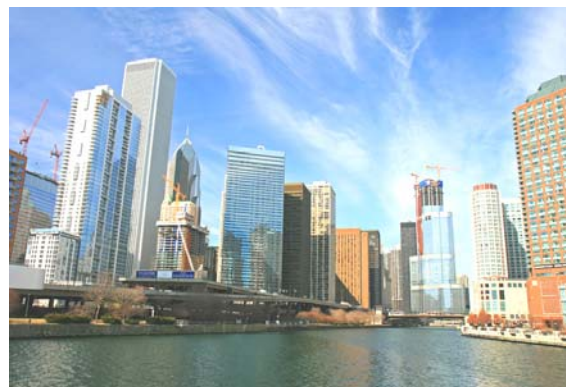
Our youth have committed to fasting for 30 hours to raise money for world hunger. Can you make a donation to feed empty stomachs around the world? \$1 can feed a child for a day through World Vision, \$30 can feed a child for a month and \$360 can feed a child for a year!

Fundraising continues for the 30 Hour Famine and S.A.C.A. (Southern Anoka County Assistance). Make a donation at the display in the commons and a piece of “food” will be put on the empty “stomach.” Let’s fill the empty stomach! 25% of all donations given at the display will go to S.A.C.A. and 75% will go to World Vision. Visit the display in the Commons for more information. We will be taking donations through February 28th.

WINDY CITY MISSION 2010

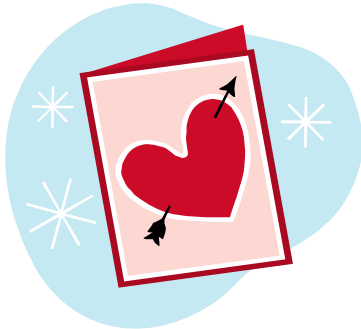
All youth and adults who are planning to participate in the Windy City Mission in June...

\$100 deposits for the trip are due on February 1st and our first Windy City Mixer for all participants is on Friday, February 12th.



WORSHIP ASSISTANTS

	8:45 AM	11:00 AM		8:45 AM	11:00 AM
Acolytes:			Ushers:		
February 7	Laura Super Catie Miller	Allison Olsen Simone Woods	February 7	Clarence Skaaden Don & Carol Wahlstrom Tony Olson Gordon Johnson Sheldon Knutson Marge Jeska	Tom Dillenburg Eugene Erickson Victor Zarich Gary Carlson Tim Traynor Bill Baker Bill Gantz
February 14	Nick Super	Brandon Burck	February 14	Pat Pasiewicz Paul Eddy Vi Makie Dale & Faith White Adlore & Mable Braaten	Glen & Betty Krahl Mike & Pam Hartel Janet & Ben Streed
February 21	Jessica Kaliher Laura Rauchwarter	Sara Miller Thomas Vescio	February 17	Ash Wednesday 7PM	Vern Hoium Pam Sigurdson John & Mary Kay Miller Sara Miller
February 28	Nasya Marquis	Simone Woods	February 21	Einar & Elinor Berg Roger & Dorothy Anderson Rita Schultz Thomas Vescio Laura Rauchwarter	Len & Jan Casanova Tom & Sonja Super Tom & Bonnie O'Brien Dave LaSota
Readers:			February 24	7 PM	Fred Edstrom Jonathon Edstrom Dave & Karen Maurer Lauren Maurer Ramona Wold Larry Larson
February 7	Vern Hoium	Kari Hauser	February 28	Matt Palm Sid Anderson Maggie Proft Doug & Pat Johnson Helen Skoglund	Bob Cabak Donna Novak John & Shirley Kennedy Alice Jedinak Pat Welf Charles Pierson III
February 14	Rock Hauser	Elayne Knutson			
February 21	Jessica/Kevin Kaliher	Diane Henderson			
February 28	Renee Latzke	Jon Lueth			
Communion Servers:					
February 7	Jill Kaliher Renee Latzke Cheryl Blinkman Rock Hauser	Christine Anderson Diane Henderson Julie Johnson Karen Karni			
February 17 7:00 PM	Ash Wednesday Suzy Vescio Cheryl Ballingrud				
Bus Driver:					
February 7	Ron Davidson				
February 14	Vance Husen				
February 21	Charles Pierson III				
February 28	Pam Sigurdson				



FIRST LUTHERAN CHURCH 2009 BUDGET - INCOME Through December 31, 2009						
			Total Annual	To Date	To Date	
			2009 Plan -	Budget	2009 Actual	
Envelope			\$ 492,600	\$ 387,600	\$ 312,758	
Electronic Fund Transfer Memo				\$ 105,000	\$ 107,492	
Cash			\$ 14,500	\$ 14,500	\$ 9,360	
Children's Globe			\$ 450	\$ 450	\$ 469	
Initial Offering			\$ 900	\$ 900	\$ 800	
Special Gifts			\$ 30,000	\$ 30,000	\$ 86,421	
Fundraiser			\$ 10,000	\$ 10,000	\$ 885	
Debt Savings			\$ 54,500	\$ 54,500	\$ 46,286	
Total			\$ 602,950	\$ 602,950	\$ 564,471	
ADMINISTRATION			\$ 16,700	\$ 16,700	\$ 9,696	
Rentals, Weddings, Interest						
EDUCATION			\$ 4,650	\$ 4,650	\$ 5,132	
EVANGELISM & OUTREACH			\$ 7,600	\$ 7,600	\$ 6,850	
Supper Income						
MUSIC			\$ 8,500	\$ 8,500	\$ 7,913	
MINISTRY			\$ 11,000	\$ 11,000	\$ 10,090	
Lent, Easter, Christmas Thanksgiving						
YOUTH MINISTRY			\$ 18,250	\$ 18,250	\$ 21,043	
			\$ 669,650	\$ 669,650	\$ 625,194	
WELCA			\$ 22,800	\$ 22,800	\$ 33,283	
MEN'S CLUB			\$ 14,500	\$ 14,500	\$ 62,649	
GRAND TOTAL INCOME			\$ 706,950	\$ 706,950	\$ 721,126	
FIRST LUTHERAN CHURCH 2009 BUDGET - EXPENSES Through Dec 31, 2009						
			Total Annual	To Date	To Date	
			2009 Plan	Budget	2009 Actual	
PAYROLL			\$ 404,430	\$ 404,430	\$ 396,776	
ADMINISTRATION						
Office Supplies, Insurance, Postage			\$ 51,850	\$ 51,850	\$ 59,527	
OPERATIONS AND MAINTENANCE			\$ 92,560	\$ 92,560	\$ 83,464	
EDUCATION EXPENSES			\$ 6,800	\$ 6,800	\$ 7,879	
EVANGELISM AND OUTREACH EXPENSE			\$ 9,500	\$ 9,500	\$ 7,974	
Advertising, Suppers, Stewardship						
MUSIC EXPENSE			\$ 14,000	\$ 14,000	\$ 14,390	
MINISTRY EXPENSE			\$ 4,000	\$ 4,000	\$ 4,381	
YOUTH EXPENSE			\$ 18,250	\$ 18,250	\$ 18,518	
BENEVOLENCES			\$ 61,045	\$ 61,045	\$ 26,410	
			\$ 662,435	\$ 662,435	\$ 619,318	
WELCA EXPENSES			\$ 11,260	\$ 11,260	\$ 17,449	
WELCA Benevolences			\$ 11,540	\$ 11,540	\$ 18,490	
MEN'S CLUB EXPENSES			\$ 10,500	\$ 10,500	\$ 63,326	
Men's Club Benevolences			\$ 4,000	\$ 4,000	\$ 4,501	
GRAND TOTAL EXPENSES			\$ 699,735	\$ 699,735	\$ 723,085	
Perpetual Reserve Loan/ Payment Due by 12/31/09				\$ 53,000		

“RESET” Studies for Lent

"Jesus is Unfair." "Jesus isn't quiet." "Jesus wants you to give up." These are some of the titles of the weekly small group Bible studies planned for Lent. These "Reset" studies invite us to "reset" our assumptions about Jesus, based on what we see in the gospel of Luke. This material was used during this past Lenten season by dozens of churches in the Cincinnati area, and over 40,000 individuals took part! Look for signup sheets in the Commons. We plan to have weekly small group studies at various times beginning Ash Wednesday (Feb. 17), including Wednesday evenings, Sunday's after church, and on weekdays. There is no cost; just bring a Bible (or we'll provide one for you). The participant's guide makes the opening comment on the six-week study: "Welcome to a 1,008-hour Jesus experience. Don't expect to finish."

PASTORAL HOSPITAL VISITS

Privacy rules are making it increasingly harder for churches to locate their members at hospitals. Consequently, if you would like to have a visit from one of the pastors during a hospital stay you must notify the church office with your request. Either call or send an email to the church office. Any staff member will be happy to take the information. Please state where and when you will be hospitalized. All three pastors are available to visit all the hospitals in the Twin Cities. We also are available for home visits. We want to share the peace of Christ and pray with you when you are sick or have surgery.

The Prayer Chain is also available to you. Please call or email the church office with any requests.

Phone: 763-788-9653

Email: firstlutheran@qwest.net

KINSHIP MENTORING PROGRAM

Our first Kinship Mentor Information Session will be held February 2, 7-8:30pm, in Martin Luther Hall.

Our partnership with Highland Elementary was launched in early January and Kinship is now offering this in-house training for those who wish to learn more about mentoring a child at the school. *This session also fulfills the training requirement for those who are currently going through the mentor screening process with Kinship.*

Penny Kallas will be with us to: 1) Talk about what it's like to mentor a child and how it impacts the child's life; 2) Discuss the Kinship screening process; and 3) Provide training on issues mentors sometimes encounter. Penny will be available for questions after her presentation.

To sign up for this session, you may either call Kinship at 763-862-6755, or the church office at 763-788-9653.

Please consider giving the gift that changes lives - become a friend for a child in need of support!

STEPHEN MINISTRY

Happy New Year. As many of you know that since Oct. of 2009, First Lutheran Stephen Ministry has hosted a class of new students who will now become Stephen Ministers in about a month. We were joined by a few other churches in the area for these classes, and will each have our own service to commission these students. We look forward to having Elayne Knutson and Bernie Loegering join our Stephen Ministry here at First.

May God be with them and continue to lead them as they become a caregiver.

God is the curer and we as Stephen Ministers are the caregivers.

Thank You

The family of Clarice Martin would like to thank the congregation of First Lutheran for the many kindnesses they have shown both Clarice and the extended family during her recent illness and upon her passing. We greatly appreciated everyone who visited her at Crestview, prayed for her, helped the family, provided numerous cakes and salads and assisted with the luncheon after the funeral service. All of your many kind thoughts and acts meant a lot to all of us during this difficult time.

The Family of Clarice Martin

Thank you to Pastor Jan and Paul Christenson for being there for our son-in-law's funeral. You were such a comfort to our daughter Julie. We also thank our friends who attended and gave us support and prayers during this difficult time.

Karen & Harvey Peterson

FROM OUR RECORDS

January Funerals

Lydia Ostrom

25th YEAR ANNIVERSARY OF ORDINATION

February 17th will be the 25th anniversary of my ordination into ministry. Twenty-one of those years have been here at FLC. This is a significant milestone for me and I want to rejoice with you and give thanks to God for having guided and brought me to this time. Please celebrate with me on Sunday February 14th in the Commons for a reception following each of the worship services. Thank you for the trust and the many ways you have helped shape my journey as a shepherd of God's precious sheep in this community.

Pastor Janice Bornhoft

FLC BOOK CLUB

February 17, 2010

10:00—11:00 am

Meet in Peace

"Still Life"

By Louise Penney

For information call or E-mail

Char Zarich

763-572-1220

LadyChar@comcast.net

SACA FOOD SHELF

SPAGHETTI DINNER FUNDRAISER

Monday

February 1, 2010

4:00—7:00 PM

EMPTY BOWLS

Monday

March 1, 2010

4:00—8:00 PM

Adults \$7.00

Children 10 & under \$4.00

**Murzyn Hall
530 Mill Street NE
Columbia Heights**

February 2010

Monthly Planner

Sunday	Monday	Tuesday	Wednesday	Thursday	Friday	Saturday
	1	2	3	4	5	6
	3:30 PM - 5:00 PM Daisy Troop - Elizabeth 6:00 PM - 9:00 PM Monte Horeb Rehearsal - Sanctuary 6:30 PM Girl Scout Troop 11817 - Elizabeth 6:30 PM Hope Circle - Peace	9:30 AM Joy Circle - Peace 9:30 AM Staff Meeting - Faith 9:30 AM - 12:00 PM Teddybear Preschool - Matthew 10:30 AM LaLeche League - Noah's Ark 11:00 AM Columbia Heights GA - Gabriel 1:00 PM Prayer Shawl Gathering - MLH 6:30 PM Chorus Polaris - Bach 6:45 PM Stephen Ministry ... 7:00 PM Kinship Informat... 7:00 PM Monte Horeb Wor... 7:00 PM Stephen Ministr...	7:30 AM Men's Bible Study Breakfast - Bobby & Steves Auto 10:00 AM Rebekah Circle - MLH 5:00 PM - 8:30 PM F.L.A.M.E. Activities 7:00 PM Baptism Orientation - Faith 7:15 PM Rachel Circle	9:00 AM Intercessory Prayer - Chapel 9:30 AM Wiggles, Giggles & Tickle - Elijah 9:30 AM - 12:00 PM Teddybear Preschool - Matthew 10:15 AM Wiggles, Giggles & Tickle - Elijah 6:00 PM Monte Horeb Prayer Time - Micah 6:00 PM Music Classes - Daniel & Elijah 6:15 PM Campanile Rehearsal - Bach 7:30 PM AA Meeting - Gabriel	6:00 AM Monte Horeb Fasting Day Begins - Gabriel 7:30 PM - 10:30 PM Tim Practice Time - Sanctuary 9:00 PM Monte Horeb Worship Team - Gabriel	1:00 PM - 4:00 PM Leisha Tays - Peace 5:00 PM Monte Horeb Prayer Time - Elijah 7:00 PM Monte Horeb Worship - Sanctuary Monte Horeb Fasting Day - Gabriel
7	8	9	10	11	12	13
8:00 AM Monte Horeb Fasting Ends 8:45 AM Worship with Communion 9:30 AM - 3:30 PM Sunday School Winter Party - Gym, Youth Room, Daniel, MLH 9:55 AM Sunday School 10:00 AM Adult Education... 11:00 AM Monte Ho... 11:00 AM Worship with C... 12:30 PM Monte Horeb Wo... 1:00 PM Monte Horeb Sunday School - Gabriel, Eli... FOOD SHELF SUN... Super Bowl Sun...	12:30 PM Hilltop Circle - MLH 6:00 PM - 8:30 PM Silver Lake Service Unit - MLH & Noah's Ark 6:00 PM - 9:00 PM Monte Horeb Rehearsal - Sanctuary 7:00 PM Martha Circle - Peace	9:30 AM Staff Meeting - Faith 9:30 AM - 12:00 PM Teddybear Preschool - Matthew 11:00 AM Columbia Heights GA - Gabriel 5:00 PM Memorial & Endowment - Faith 6:00 PM Monte Horeb/FLC Task Force Meeting - Elijah 6:30 PM Chorus Polaris - Bach 6:30 PM Men's Club - Faith 6:45 PM Stephen Ministry Training - Gabriel 7:00 PM Monte Horeb Wor... 7:00 PM Small Group Leade...	7:30 AM Men's Bible Study Breakfast - Bobby & Steves Auto 9:00 AM Mission Workshop - Lydia & Gabriel 5:00 PM - 8:30 PM F.L.A.M.E. Activities 7:00 PM - 8:30 PM 7th Grade Confirmation - onsite 7:00 PM - 8:30 PM 8th & 9th Grade Confirmation Service Project - Sharing & Caring Hands	9:00 AM Intercessory Prayer - Chapel 9:30 AM Wiggles, Giggles & Tickle - Elijah 9:30 AM - 12:00 PM Teddybear Preschool - Matthew 10:15 AM Wiggles, Giggles & Tickle - Elijah 6:00 PM Monte Horeb Prayer Time - Micah 6:00 PM Music Classes - Daniel & Elijah 6:15 PM Campanile Rehearsal - Bach 7:30 PM AA Meeting - Gab... 7:30 PM SpiritWind Rehear...	7:30 PM - 10:30 PM Tim Practice Time - Sanctuary	5:00 PM Monte Horeb Prayer Time - Elijah 7:00 PM Monte Horeb Worship - Sanctuary
14	15	16	17	18	19	20
8:45 AM Worship 9:55 AM Sunday School 10:00 AM Adult Education & Fellowship Time - MLH 10:00 AM Small Group Leader's Training - Peace 11:00 AM Monte Horeb Prayer Time - Elijah & Gabriel 11:00 AM Worship 12:30 PM Monte Horeb Worship - Sanctuary 1:00 PM Monte Horeb Sunday School - Gabriel, Eli... Rec. to Celebrate 25th Anniversary of Pastor Jan's Ord...	3:30 PM - 5:00 PM Daisy Troop - Elizabeth 6:00 PM - 9:00 PM Monte Horeb Rehearsal - Sanctuary 6:30 PM Girl Scout Troop 11817 - Elizabeth	9:30 AM Staff Meeting - Faith 9:30 AM - 12:00 PM Teddybear Preschool - Matthew 10:30 AM LaLeche League - Noah's Ark 11:00 AM Columbia Heights GA - Gabriel 1:00 PM Young at Heart - MLH 6:30 PM Chorus Polaris - Bach 6:30 PM - 7:30 PM Alzheimer's Support Group - Elizabeth 6:45 PM Stephen Ministry ... 7:00 PM Monte Horeb Wor...	7:30 AM Men's Bible Study Breakfast - Bobby & Steves Auto 10:00 AM Wednesday Study Group - Hope 2:00 PM Worship - Chapel 3:15 PM Cresview Care Center Communion 5:00 PM Executive Committee 6:00 PM Physical Plant Meeting - Hope 6:00 PM - 6:30 PM Chapel Choir - Bach 7:00 PM Worship - Sanctuary ASH WEDNESDAY LENTEN F.L.A.M.E. S...	9:00 AM Intercessory Prayer - Chapel 9:30 AM Wiggles, Giggles & Tickle - Elijah 9:30 AM - 12:00 PM Teddybear Preschool - Matthew 10:15 AM Wiggles, Giggles & Tickle - Elijah 6:00 PM Monte Horeb Prayer Time - Micah 6:00 PM Music Classes - Daniel & Elijah 6:15 PM Campanile Rehearsal - Bach 7:30 PM AA Meeting - Gab... 7:30 PM SpiritWind Rehear...	7:30 PM - 10:30 PM Tim Practice Time - Sanctuary	5:00 PM Monte Horeb Prayer Time - Elijah 7:00 PM Monte Horeb Worship - Sanctuary 7:00 PM No Experience Necessary Bible Study - Peace
21	22	23	24	25	26	27
8:45 AM Worship with Communion 9:55 AM Sunday School 10:00 AM Adult Education & Fellowship Time - MLH 11:00 AM Monte Horeb Prayer Time - Elijah & Gabriel 11:00 AM Worship 12:30 PM Monte Horeb Worship - Sanctuary 1:00 PM Monte Horeb Sunday School - Gabriel, Elijah, Noah's Ark, Daniel & Faith 1:00 PM - 3:00 PM Ye... 4:00 PM Metropolitan B...	6:00 PM - 9:00 PM Monte Horeb Rehearsal - Sanctuary	9:30 AM Staff Meeting - Faith 9:30 AM - 12:00 PM Teddybear Preschool - Matthew 11:00 AM Columbia Heights GA - Gabriel 6:30 PM Boards (Bach, Elijah, Gabriel, Hope, Peace, Youth Room) 6:30 PM Chorus Polaris - Bach 6:45 PM Stephen Ministry Training - Gabriel 7:00 PM Monte Horeb Worship - Sanctuary 7:45 PM Council Meeting - Faith	7:30 AM Men's Bible Study Breakfast - Bobby & Steves Auto 9:00 AM Mission Workshop - Lydia & Gabriel 5:00 PM - 9:00 PM Lenten F.L.A.M.E. Schedule 7:00 PM Worship - Sanctuary	9:00 AM Intercessory Prayer - Chapel 9:30 AM Wiggles, Giggles & Tickle - Elijah 9:30 AM - 12:00 PM Teddybear Preschool - Matthew 10:15 AM Wiggles, Giggles... 12:00 PM Set up for 30 Hour Famine - Commons, Link, MLH, Kitchen, Gym, Katie Luther Cellar, Youth Wi... 6:00 PM Monte Horeb Pra... 6:00 PM Music Classe... 6:15 PM Campanile Rehear... 6:30 PM - 9:00 PM Gideon... 7:30 PM AA Meeting - Gab...	6:00 PM 30 Hour Famine Starts - Sanctuary, Commons, Link, MLH, Kitchen, Katie Luther Cellar, Youth Wing, Gabriel, Micah 7:30 PM - 10:30 PM Tim Practice Time - Sanctuary	8:30 AM - 12:00 PM Stephen Ministry Training 5:00 PM Monte Horeb Prayer Time - Elijah 7:00 PM 30 Hour Famine Ends - Sanctuary, Commons, Link, MLH, Kitchen, Katie Luther Cellar, Youth Wing, Gabriel, Micah 7:00 PM Monte Horeb Worship - Sanctuary

28

8:45 AM Worship
 9:55 AM Sunday School
 10:00 AM Adult Education & Fellowship Time - MLH
 11:00 AM Monte Horeb Prayer Time - Elijah & Gabriel
 11:00 AM Worship
 12:30 PM Monte Horeb Worship - Sanctuary
 1:00 PM Monte Horeb Sunday School - Gabriel, Elijah, Noah's Ark, Daniel & Faith

WEDNESDAY F.L.A.M.E. SCHEDULE
Dinner 5:00-6:30 Served in MLH
Nursery 5:30-7:00 Noah's Ark (up to age 4)
Choirs 5:30-6:15 Celestial Choir (K - 2 nd) 6:00-7:00 Chapel Choir (7 th -12 th) 6:30 - 7:15 Cantorei Choir (3 rd - 6 th) 7:00-8:30 Senior Choir
Adult Activities 6:00-7:00 Bible Study 6:00-7:00 Parents' Time-Out
Youth Activities 5:30-7:00 Kid's Time (K - 5 th) 5:30-8:00 Open Youth Room (6 th -12 th) 5:30-6:30 Good News Bearers (3 rd -6 th) 6:15-6:30 Good News Bearers' Skit 7:00-8:30 Confirmation

WEDNESDAY EVENING LENTEN SCHEDULE	
Starting February 17th	
Soup Supper - 5:00-6:30 Served in Martin Luther Hall	
Worship - 7: 00	
Choirs 5:30-6:15 Celestial Choir (K-2 nd) 6:00-6:50 Chapel Choir (7 th -12 th) 6:15-6:50 Cantorei Choir (3 rd -6 th) 7:45 Senior Choir	Youth Activities 5:30-6:15 Good News Bearers 6:15-6:30 Good News Bearers Skit 5:30-6:45 Kids' Place (K - 5 th)
Adult Activities 6:00 - 6:45 Parents' Time-Out	

FIRST LUTHERAN CHURCH
1555 40th Avenue NE
Columbia Heights, MN 55421-3195
763-788-9653
Address Service Requested

Non-Profit Org
U.S. Postage
PAID
Permit No. 1813
Minneapolis, MN

THE CALLER is published monthly by First Lutheran Church of Columbia Heights. Articles for the **March 2010** issue are due in the church office by **January 12, 2010**. Notices for the Sunday bulletin are due each Wednesday at 9 AM.

Phone: 763-788-9653

Staff

Thomas M. Carlson.....Senior Pastor
Janice Bornhoft.....Associate Pastor of Spiritual Care
Amy Orstad.....Associate Pastor
Leisha Tays.....Director of Youth & Family Ministry
Peter Carlson.....Minister of Music
Timothy Short.....Associate Organist
Hannah Bolt.....Director of Children's Choir
Rock Hauser.....Food Services Director
Jennifer Shull.....Nursery Coordinator
Carol O'Brien.....Assoc. Nursery Coordinator
Julie Johnson.....Business Administrator
Dayle Boyce.....Parish Secretary

Custodians

Roger Johnson, Sheldon Knutson, Don Rosell,
Florian Janey, Ron Boyce, Josh Tays

WORSHIP SCHEDULE

Sunday Mornings

8:45 & 11:00 AM Worship
9:55 AM Sunday School
10:00 AM Adult Education

Wednesday Evenings

FLAME Activities 5:00—8:30 PM



CALLER DEADLINES:

Please have any information for the Caller into the church office by the end of the business day on the **12th** of each month.

E-mail address: firstlutheran@qwest.net

WEB Address: www.flcch.org